



TEMPLE BETH SHOLOM B U L L E T I N



Number 5, 2020-2021

January 2021, Tevet - Shevat 5781

Rabbi Moti Rieber



Rabbi's Column

Interfaith: The Challenge and the Promise

Recently I was asked to take part in an interfaith prayer service about the election. It was the first time I was asked to do such an event as the rabbi in Topeka and I figured the community wants me to represent it at such events, so I agreed. I did not think to ask about the ground rules.

My understanding of the etiquette for such events, and the way I organize them for Kansas Interfaith Action, is that the participant speaks from their own tradition, such as, say, sharing a story from the New Testament or the Quran, but that when they pray, they pray for everyone. What this means in effect is that participants conclude their prayer "in God's name" or "in your name," but not, "in Jesus' name." Although that may be more authentic to a Christian's religious identity, such a prayer is not inclusive; Jews cannot say "Amen" to it; it is against our religion.

In this particular service, which I was one of I think two non-Christian participants, this etiquette was not followed. Several of the Christian clergy prayed, "in Jesus' name." I started getting texts from Temple members during the service saying, "this is making me uncomfortable," to which I answered, Me too! I reached out to the organizers after the event, but the aftermath is not really a happy one. Some people felt that I was trying to tell them how they should pray. To me, saying "In your name" instead of "in Jesus' name," with no other changes seems like a small accommodation to make. But not everybody agrees with that. In fact, we are at something of an impasse. It may be that we will have to figure out some other way to be in community besides praying together. But I will be more careful about ground rules next time!

Then, on the Shabbat of Hanukkah, the Capital-Journal ran a piece by a fundamentalist Christian pastor negatively comparing Hanukkah to Christmas. It caused quite a stir on the Temple Beth Shalom Facebook group! The piece contained a lot of inaccuracies and tendentious reasoning and was really offensive to the Jewish community. On Monday, I called the editor, explained the issue and she invited me to write a follow-up column. I will not go into all the details here because those articles are online. But she seemed genuinely surprised that the Jewish community was upset and offended, and she was quite accommodating.

As a minority community, we Jews will often be misunderstood, our concerns ignored. Whether it be Homecoming on Yom Kippur or annoyance that people want accommodations in public prayer, we are always in the position of explaining ourselves and our needs to the majority population. It can be exhausting, especially when we have the same conversations over and over, or when our concerns are seen as unreasonable or inconvenient. But we do it because we are proud of who we are and because we want to defend our way of life. Each and every time we have one of these conversations, we are standing up for ourselves, and for Jewish people everywhere, proclaiming to ourselves, to our children, and to our neighbors, that being Jewish is important enough to make a fuss about.

Contributions

We appreciate the thoughtfulness of those who support Temple Beth Shalom by remembering and honoring their friends and loved ones through their generous contributions.

General Fund

Einsteins

Nick Dyer

Jane Greene

-Thank you, Alan Parker, for your time and effort on the beautiful online Temple gift shop

Jack and Rhoda Wisman

-In memory of Roselle Endlich

-In memory of Ben Cohen

-In memory of Irv Rosen

-In memory of Jacob Wisman

-In memory of Jim Carbley

-In memory of Evie Pozez

-In memory of Rabbi Stephen Forstein

-In memory of Belle Einstein Thornton

-In memory of Lawrence Stocker, Sr.

-In memory of Mollye Scrinopskie

-In memory of Les Scrinopskie

-In memory of Harriet Kolman

-In memory of Richard Hoffman

Simon Joseph

Music Fund

Kelly Perkins

-Thank you to Jack and Rhoda Wisman

Blintze Brunch

Kelly Perkins

-Thank you to Jack and Rhoda Wisman

Maimonides Fund

Jack and Rhoda Wisman

-In memory of Rubie Scott

Security Fund

Russ and Jane Greene

-Speedy recovery to Len and Terry Richter

Leif Dolan and Deborah Edelman-Dolan

-In memory of Dr. Sheldon Edelman

-In memory of Warren Zevon

-In memory of Rose Edelman

-In memory of David Edelman

Kelly Perkins

-Thank you to Leif Dolan and Deborah Edelman-Dolan

Endowment

Harlan Black, Sarah, Anthony and Gavin Roth

-In memory of Samuel Stanberry

Religious School Fund

Ezra and Barbara

Ginzburg

-In memory of Ken Curnes

Lawrence Jewish

Community

Adult Education Fund

Jack and Rhoda Wisman

-In memory of Norma Shapiro

Kelly Perkins

-Thank you to Leif Dolan and Deborah Edelman-Dolan

Breakthrough House

Sharon Nathan

Monthly Meditation **via Zoom**

**Has been cancelled
until further notice.**

Committee Meeting:

Social Action

Committee meeting

Sunday, January 24

1:00 pm via Zoom

Calendar of Jewish Holidays for 2020-2021

<https://jcrbajc.org/resources/religious-calendars.html>

Yahrzeits

January 1 – Joe Goodman, Malach Gordon, Anita Sheffel, Joe Gutovitz, Barry Epoch, Alexander Levy, Gertrude Ungerman Pozez, Eli Shapiro, Bonny Cohen, Edward Cumonow, Barney Horwitz, Karl Targownik

January 8 – Bertha Gordon, Scott Richter, Abe Affron, Rose Ulamperl, Elisabeth York, Louis Epstein, Louis Fisher, Joseph Kohn, Hy Kornbleet, Pearl Jeanne Berman, Irving Facher, Leonard Bass, Sylvia Cohen, Diane Organ, Esther Moses, Phillip Gordon, Bernard Schwartz

January 15 – Paul Parker, Leopold Bergmann, Kathleen Black, Benjamin Nathanson, Anne Belle Pusitz, Peter Snow, Simon Galitzki, Alice Allan, Esther Rose Kadish, Jack London

January 22 – Tony Caruso, Sylvia Grodberg, Luas Erp, Joseph Silver, Stanley Blum, Idella Barshop, Ann B. Berger, Charles Einstein, Lena Hurwitz, Albert Frieman

January 29 – Ralph Bass, Patricia Berger, Jim Ramberg, John Black, Esther Endlich, Idaleone Pressman, Molly Scrinopskie, Leo Shapiro, Doba Briman, Nancy Epoch, Carl Malley, Helen Petrucci

JANUARY SHABBAT SERVICES

Religious Services for January via Zoom

(Zoom Links are also in Weekly emails or reminder service emails)

Friday, January 1, Shabbat Service – 7:30 pm

Frayna Scrinopskie, Sarah Roth and Rhoda Wisman will lead the service. Zoom Link:

<https://us02web.zoom.us/j/85372307710>

Friday, January 8, Shabbat Service - 7:00 pm

Rabbi Rieber will lead the service. Birthday and Anniversary blessings will be given.

Zoom Link: <https://us02web.zoom.us/j/85372307710>

Friday, January 15, Shabbat Service – 7:30 pm

Julie Petruccelli-Treen, Sarah Roth and Warren Sickel will lead the service. Susan Zuber-Chall will give D'var Torah.

Zoom Link: <https://us02web.zoom.us/j/85372307710>

Friday, January 22, Shabbat Service - 7:30 pm

Rabbi Moti Rieber will lead the service.

Zoom Link: <https://us02web.zoom.us/j/85372307710>

Friday, January 29, Shabbat Service - 7:30 pm

Deborah Edelman-Dolan and Stephanie Schuttera will lead the service.

Zoom Link: <https://us02web.zoom.us/j/85372307710>



Save the Date for our 2021 Scholar-in-Residence weekend:

Judaism and the Mysteries of Life, Death and the World Beyond

by Rabbi Simcha Raphael

Friday and Saturday, February 5-6, 2021 (Via Zoom)

Watch for more details!

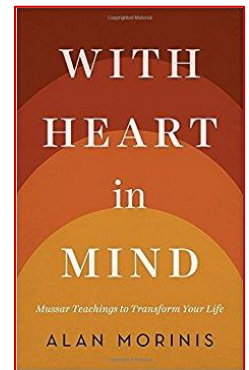
At this tough time for Temple Beth Sholom, we would appreciate any extra donations.

Make donations and contributions to Temple at this secure link (in the message box on the checkout page, put what the donation is for): <https://tbs.convertri.com/donate>

Middot Va'ad: Gaining Jewish Wisdom and Understanding

Next Meeting: January 20 at noon via Zoom

We read Alan Morinis' *With Heart in Mind ~ Mussar Teachings to Transform Your Life*. We study the character traits (*middot*) and work on bringing them into our lives in the right amount. Please have the book for the *Va'ad* meetings. We will review Chapter 35 and read Chapter 36. Newcomers are always welcome. The Zoom link will be in the Temple Beth Sholom weekly e-mail.



Monthly Shabbat Morning Study Opportunity

Kabbalah Study - 9:00 - 10:30 am, Saturday, January 9 and 23, via Zoom.

***Introduction to the Zohar*, by Arthur Green.**

Our group is reading Art Green's excellent and thorough introduction to the Pritzker edition of the *Zohar*. If you want to get an inside look at the *Zohar*, please join us for this fascinating read! Let the Temple Office know if you want to attend via Zoom.



RJ on The Go

Interactive Jewish Experiences for Everyone in Your Family

http://cloud.email.rj.org/RJonTheGo-Info?utm_source=InsideLeadership&utm_campaign=Resources&utm_medium=email&utm_content=2020_10_20

SAVE THE DATE:

TEMPLE BETH SHOLOM'S AMERICAN RED CROSS BLOOD DRIVE
Sunday, January 31, 9:00 am to 1:00 pm in the Social Hall

Email [Doug Meyers](mailto:Doug.Meyers@templebethsholom.org) to schedule your life saving appointment or for any questions.

Visit redcrossblood.org for additional information about eligibility or call 1-800-RED-CROSS.



A new feature in the Bulletin will be a list of birthdays and anniversaries of members for the month. The office did not have a birth date or anniversary for everyone. If your birthday or anniversary is not listed or if you do not want your birthday or anniversary listed, please inform the Temple office. We hope you enjoy seeing who else has a birthday the same as you.

January Birthdays

Luanne Leeds – 1st
 David Mudrick – 3rd
 Mary Ann Bryan – 5th
 Marilyn Parker – 7th
 Karen Sessel – 15th
 Michael Weinsaft – 17th
 Yocheved Nusbaum – 21st
 Harold Youngentob – 22nd
 Joan Briman – 24th
 Derie Briman – 25th
 Niam Briggs – 25th
 Marsha Pankewich-West – 26th
 Wheeler Benson-Ross – 27th
 Veda Benson-Ross – 28th
 Emma Cohn – 30th

January Anniversaries

Russ and Jane Greene – 4th



The Temple Beth Sholom family extends condolences to:

To **Jack and Rhoda Wisman**, for the death of Rubie Scott, Jack's aunt.

To **Allen and Gail Gutovitz** for the death of Richard Hoffman, Gail's brother

Zichronam livracha – May their memory be a blessing.

Highlights from Temple Beth Sholom Board meeting, December 2, 2020


- The Temple Gift Shop has opened an online page for people to view and purchase Hanukkah items.
- A new Nominating Committee is being formed for the purpose of finding Board candidates for the next fiscal year.
- Rabbi Rieber is working on securing Rabbi Simcha Rafael as a Scholar-In-Residence for the first weekend in February. Since it will be an online Zoom event, we may also be inviting some of the community to join.


Doorstep Newsletter Article – January 2021

The year 2020 was challenging for everyone in some way. Doorstep has felt very blessed during the year with the volunteers who were comfortable coming in to help the staff provide services, and sort donations and there were many donations with people being home! We also felt very blessed, and supported by all our donors, and the community, who helped keep our food shelves stocked throughout the year, and the monetary donations which kept our doors open, and services being provided.

We will start 2021 operating the same way we have been in 2020, with phone intakes for services, and appointments for the clothing room.

**DOORSTEP'S
"SOUPERBOWL
SUNDAY" IS
FEBRUARY 7th**



**BRING
SOUP**

**AND
CRACKERS** 

Our Goal this year is 2.5 ton... 5,000 pounds!

**TO YOUR CONGREGATION TO HELP
STOCK DOORSTEP'S FOOD PANTRY!**

Doorstep adopted the usual 260 households from the Christmas Bureau. This is over 800 individuals who will receive food, gift cards, blankets, and health kits. We appreciate everyone who sent monetary donations to help with the increased budget to provide the gift cards this year; and those who donated blankets, towels, and hygiene items.

There will be no Operation Soup Line this year as the Board could not figure out a COVID safe, fundraising positive, way to carry out the event. We have asked our regular sponsors to still donate the funds and basically 'sponsor Doorstep' instead of the event this year as to not lose quite so much money by not having the fundraiser.

We will still proceed with Souper Bowl Sunday, February 7 with the collection of soup and crackers to help stock our pantry! Please collect these items to bring to your congregation, or to Doorstep.

We cannot stress enough how thankful and blessed we feel to be so supported during this difficult time as we continue to help our neighbors in need the best way possible.

Happy New Year Temple Beth Sholom friends and family!

As we say goodbye to 2020 and welcome in 2021, many people will be making New Year resolutions. These are usually simple things, such as being more organized, exercising, and eating healthier. But this year we may need to go a bit deeper. While life has presented many challenges for many people in the past year, it may be difficult to stay on target with your goals. Or your goals may have shifted quite a bit! As you read this, stop, and take a few deep breaths. Think about ways that you can truly make a change this year.

During 2020, I took the opportunity of being “safe at home” with my family as a gift of time. I accomplished many things on my perpetual to-do list since I could not use the excuse that I was never home long enough to do them. While life has stayed busy with my family and work, I have learned to be more present as well. I have made many lifelong memories with my kids! Some projects that we tried were related to our Jewish faith. I had never made challah before the pandemic, so it was really fun to watch the yeast and dough rise and feel a better connection to Shabbat. And there is nothing like the taste of fresh challah! We also made charoset from scratch and built (shabby chic) matzah houses for Passover.

As you try to settle on a few attainable New Year resolutions for 2021, try to think of ways that you might connect with your Jewish faith in a stronger way! Maybe you will join us for Shabbat services on Zoom more often. Maybe you will make matzo ball soup from scratch. Maybe there is an Adult Education class that may pique your interest. Perhaps you will even join a committee. Whatever you decide to do, know that your Temple Beth Sholom family and friends are here to support you!

So please join me in the Shehecheyanu Prayer for a new beginning to 2021!

בָּרוּךְ אַתָּה, יי אֱלֹהֵינוּ, מֶלֶךְ הָעוֹלָם, שְׁהַחֵינּוּ וְקִיַּמְנוּ וְהִגִּיעַנוּ לְזֶמַן הַזֶּה.

Baruch atah, Adonai Eloheinu, Melech haolam, shehecheyanu, v'kiy'manu, v'higiyanu laz'man hazeh.

Blessed are You, Adonai our God, Sovereign of all, who has kept us alive, sustained us, and brought us to this season.

- 2020 Union for Reform Judaism

Wishing you all the best,
Hayley Magee
Temple Beth Sholom Board of Directors' member

TEMPLE BETH SHOLOM RELIGIOUS SCHOOL NEWS

January

TEMPLE BETH SHOLOM RELIGIOUS SCHOOL 10:30 am VIA ZOOM

Sunday, January 31, NO Class

Sunday, January 10, All Classes meet

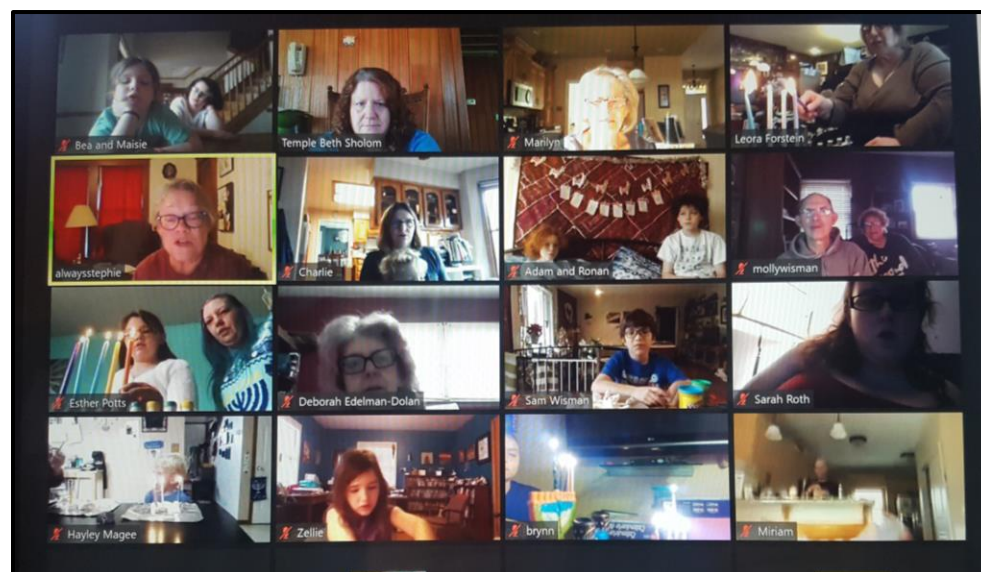
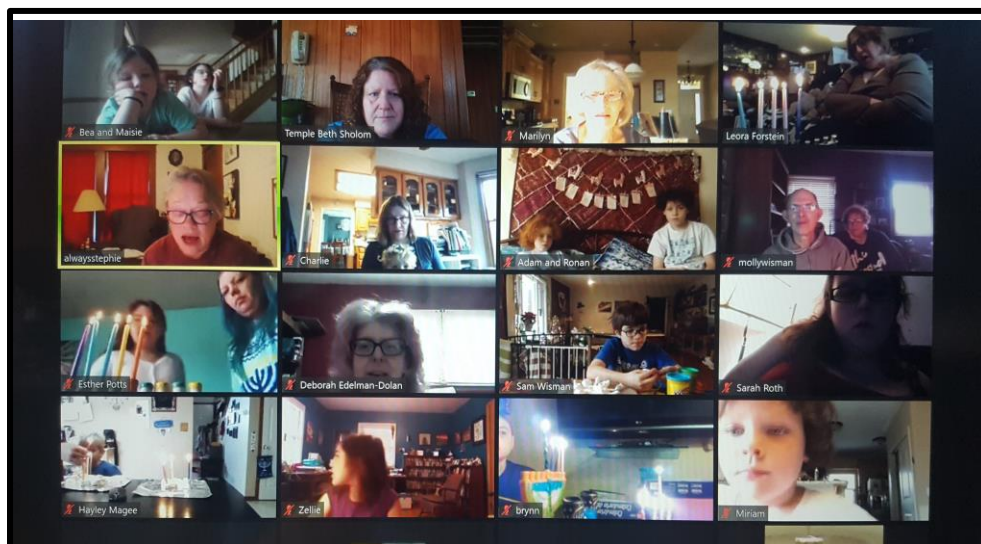
Sunday, January 17, All Classes meet

Sunday, January 24, All Classes meet

Sunday, January 31, NO Class

לְלַמֵּד וּלְלַמֵּד
"TO STUDY AND TO LEARN"

RELIGIOUS SCHOOL HANUKKAH CELEBRATION ON DECEMBER 13



HANUKKAH CELEBRATION ON FRIDAY, DECEMBER 11



The **Facility Usage During the Pandemic** ad hoc committee was formed to suggest guidelines for a safe return to Temple usage.

The Facility Usage Committee unanimously agreed that Friday night Shabbat services should continue via Zoom.

The following guidelines were presented to and approved by the Temple Board of Directors.

Temple Beth Sholom Guidelines for small group meetings:

1. The committee chair or group leader of a meeting will sign up with the Temple office to reserve a date and time for the meeting.
2. Committees or groups will be encouraged to meet outdoors (e.g. in the gazebo). If meeting indoors is necessary, committees are encouraged to open a door or window for ventilation.
3. Every attendee will sign in, including a phone number, in case contact tracing is necessary.
4. All attendees will be required to maintain a 6' social distance and wear a mask at all times. The mask must be worn properly, covering the nose and mouth, and may not be removed, including when speaking.
5. The committee chair or group leader is responsible to wipe down all surfaces and doorknobs (or may designate someone) after a meeting.
6. Food and drink should not be served as masks should always remain on.
7. Taking of temperatures is not required. In person, Zoom or a hybrid meeting will be left up to the Committee chair or group leader. Ideally, a Zoom option will be available for individuals preferring to attend online.

Guidelines to scheduling meetings

1. One group at a time will meet at Temple.
2. One AM meeting and one PM meeting per day
3. Exception to #2 would be if there is one small group meeting followed by another with four to five attendees in each group and the same facilitator, e.g. Frayna's Hebrew classes.

Cleaning supplies and hand sanitizer will be placed in the board room, library, bathrooms, and social hall.

Temple Beth Sholom will follow the State of Kansas Ad Astra plan and monitor the county COVID numbers and will modify the guidelines accordingly.

Every Tuesday, you receive the announcement below in our weekly email.

“Hy-Vee Gift Cards & Dillons Rewards Program

Don't forget we have Hy-Vee gift cards in the Temple office, and we get 5% from Hy-Vee. You can purchase other gift cards at Hy-Vee with your Temple Hy-Vee gift card, purchased at Temple Beth Sholom. And as a reminder, if you are signed up for the Dillons Community Reward program through your Dillon's card, Temple Beth Sholom receives a percentage of your grocery purchases.”



For many years Temple Beth Sholom has relied on Dillons Community Rewards program and the purchase of Hy-Vee gift cards from Temple Beth Sholom to supplement our annual income.

An interesting bit of trivia, and we all know how much Jack Wisman likes trivia, he and Helen Berlin began a script program with Albertsons on February 25, 1997! I believe we began the programs with Dillons and Hy-Vee in December of 2013.

For the first several years, Temple Beth Sholom earned approximately \$2,000 per year just from Dillons with 45 households registered. In 2020, we have 46 households registered; we are on track to receive \$1100 from the program.

Dillons no longer gives rewards for gas purchases or gift cards, which accounts for some of the drop in amount we are receiving. But I would like to encourage those who are not enrolled to follow the instructions below to link up your Dillons Plus card or obtain a Dillons Plus card if you shop at Dillons. This will also work at other Kroger Stores. When we travel to California (like in the good old days), our Dillons card (Kroger) can be used at Ralphs.

We also have gift cards to Hy-Vee available in the Temple office. Thank you to Margot Brown who purchases the gift cards in which Temple Beth Sholom receives 5% of the gift card face value.

Please consider taking the extra effort to support Temple Beth Sholom. There is no extra cost to you, but Temple Beth Sholom will reap the benefits.

Jane Greene

How to enroll in Dillon's Community Rewards program

Obtain a Dillon's Plus card available at any Dillon's store (if you do not already have one). You will need the number on that card to set up an on-line account.

Go to www.dillons.com to SET UP AN ACCOUNT.

IF YOU DO NOT ALREADY HAVE AN ACCOUNT click REGISTER in the upper right corner.

Enter your email address, password, zip code (select preferred store) and check the box if you desire to receive email communications from Dillons

Click on CREATE ACCOUNT at the bottom of the page

You will receive an email confirmation to your inbox, to activate your account, click on the link in the body of the email and enter your sign in information to confirm

IF YOU HAVE AN ACCOUNT, click SIGN IN in the upper right corner.

TO ENROLL IN THE COMMUNITY REWARDS PROGRAM:

Find the button or tab for COMMUNITY REWARDS (may be under the COMMUNITY tab on the top bar).

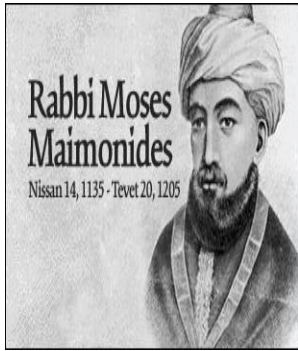
Click on ENROLL NOW

Enter the following 5-digit NPO number: BL361, and search.

Select Temple Beth Sholom and click on ENROLL.



Community Rewards



Just a reminder, at the 2013 Annual meeting, the congregation approved establishing a Maimonides Rabbinic Fund to assure continued rabbinic leadership at Temple Beth Sholom.

This assessment amounts to \$5 per month per family or \$60 a year and started with our fiscal year beginning June 1, 2013.

If possible, please send a separate check for \$60 (made out to Temple Beth Sholom or Maimonides Fund), with your dues check to make your contribution to the Maimonides Rabbinic Fund.

Also, contributions to this fund do not need to be limited to this yearly payment. Donations can also be made for a *yahrzeit*, to commemorate a birth or a wedding, a thank you, etc.

Reform Jewish Calendar of Major Jewish Holidays 2020-2021 (5781)

Purim	February 25-26, 2021 (sunset Thursday-sunset Friday)
Passover	March 27- April 3, 2021 (sunset Saturday-sunset Saturday)
Shavuot	May 16-17, 2021 (sunset Sunday-sunset Monday)

Church Using Temple

The Apostolic Assembly Church is using the Social Hall at the Temple. They are in the building on Wednesday evenings from 7:00 – 8:30 pm and on Sunday afternoons from 1:00 – 4:30 pm. Please greet them when you see them. They will be adhering to strict cleaning and social distancing guidelines.

Friday Shabbat Services via Zoom

We are reading Mi Shebeirach names again during our Shabbat Services via Zoom. If you would like your name or someone else's name read, please email the Temple office by Wednesday prior to that Friday's Service to have your name(s) added. Please note that they will be read during the Shabbat service via Zoom and on Facebook Live in the private group.

As we move into transition, we need more lay leaders. If you are interested in leading services or learning what goes into leading a service, please contact Julie Petruccelli-Treen at petruccellitreen.jl@gmail.com or the Temple Office. With enough interest, we will put together a class. This is a unique and special way to help your congregation.

LEGACY SOCIETY

The Legacy Society is a group of individuals who have left property, funds, or a percentage of funds to Temple Beth Sholom endowment in their wills. This Society is open to everyone, and the only requirement is to fill out a form and let Jack Wisman know that you have mentioned Topeka Beth Sholom in your will. Exact details of what is allocated are not required, but the will must be properly executed. The Legacy Society will be mentioned periodically in hope that more and more members will join. Please let us know if we can add your name to this list of individuals who have put Temple in their wills.

Anonymous
Harlan and Peggy Black
Dale and Joan Briman
Steve and Derie Briman
Cyrus A. Cohen (deceased)
Deborah Edelman-Dolan
Harry and Roselle Endlich (deceased)
Nancy Epoch (deceased)
Geri Goldstein (deceased)
Russ and Jane Greene
Mark and Mary Greenberg
Allen and Gail Gutovitz
Alan Haimowitz
Peter Haxton and Robin Kempf
Bill Leeds (deceased)

David Levit (deceased)
Ruthann and Louis Pozez (deceased)
Shaol and Evie Pozez (deceased)
Edward Robinson (deceased)
Irv Rosen (deceased)
Lorne and Marie Ruby
Irv Sheffel (deceased)
Howard and Elaine Schwartz
Jewel and Nathaniel Uhr
Dorothy Vehon (deceased)
Vivian Wallach (deceased)
Alan and Molly Wisman
Fannie Wisman (deceased)
Jack and Rhoda Wisman



Temple Beth Sholom 56th Annual Jewish Food and Cultural Fair COOKING DATES AND TIMES

Cooking Dates:	Sunday, February 14	9:00 am - 1:00 pm	Blintzes
	Sunday, February 28	9:00 am - 1:00 pm	Blintzes
	Sunday, March 7	9:00 am - 1:00 pm	Cabbage Rolls
	Sunday, March 21	9:00 am - 1:00 pm	Knishes

If you can help with the cooking or have questions, please call Jack Wisman at 357-4104. Jack would like some volunteers to prepare the day before (Saturdays) for each cooking date.

Blintze Brunch for 2021 Scheduled

The 2021 Blintze Brunch will be Sunday, May 2. The plan is to have an online purchase and curbside pick-up Brunch again. The Silent Auction and variety of bake goods will be available, too. Watch for more details.



Temple Beth Sholom has many special funds that benefit and enrich our community. Members and friends are always welcomed to contribute to these funds when the spirit moves them. Such gifts can honor a friend's achievement, recovery of a special person, memory of a loved one, a life-cycle event, or any appropriate occasion! Giving can be a moving experience – for the giver as well as the honoree. Try it! It really feels good. Enclose a check with the coupon below and mail to: Temple Beth Sholom, 4200 SW Munson Ave., Topeka, Kansas, 66604.

Or **make donations and contributions to Temple at this secure link** (In the message box on the checkout page, put what the donation is for): <https://tbs.convertri.com/donate>

✂ Enclosed please find my/our contribution of \$_____ to the following fund:

<input type="checkbox"/> Campership Fund	<input type="checkbox"/> Mitzvah Committee Fund	<input type="checkbox"/> Security Fund
<input type="checkbox"/> Children's Wall	<input type="checkbox"/> Music Fund	<input type="checkbox"/> Tree of Life
<input type="checkbox"/> Social Action Fund	<input type="checkbox"/> Prayerbook Fund	<input type="checkbox"/> Endowment Fund (Make
<input type="checkbox"/> Fannie Wisman Kitchen Fund	<input type="checkbox"/> Pusitz Memorial Library Fund	check to Jewish Community
<input type="checkbox"/> General Fund	<input type="checkbox"/> Rabbi's Discretionary Fund	Foundation)
<input type="checkbox"/> Leadership Fund	<input type="checkbox"/> Religious School Fund	<input type="checkbox"/> Maimonides Fund

Optional Information:

This contribution is: _____ in honor of _____ in memory of _____ other _____

Name(s) and address (if acknowledgement card is to be sent)

Donor's Name: _____

Donor's Address: _____

____ Please keep donor information private.

(Minimum \$6.00 donation requested for each acknowledgement card)

JANUARY 2021

Sunday	Monday	Tuesday	Wednesday	Thursday	Friday	Saturday
<p>Want to keep up with Temple EVENTS?!</p> <p>Access Temple's Calendar:</p> <p>http://templebethsholomtopeka.viewevents.com</p>					<p>1</p> <p>Shabbat Service via Zoom 7:30 pm</p> <p>Frayna Scrinopskie/ Sarah Roth/ Rhoda Wisman</p>	<p>2</p>
<p>3</p> <p>NO Religious School</p>	<p>4</p>	<p>5</p>	<p>6</p> <p>Board Meeting via Zoom 7:00 pm</p>	<p>7</p>	<p>8</p> <p>Family Shabbat Service via Zoom 7:00 pm</p> <p>Rabbi Rieber</p>	<p>9</p> <p>Kabbalah Study Group 9:00 am via Zoom</p>
<p>10</p> <p>Religious School via Zoom 10:30 am</p>	<p>11</p>	<p>12</p>	<p>13</p> <p>NO Meditation</p>	<p>14</p>	<p>15</p> <p>Shabbat Service via Zoom 7:30 pm</p> <p>Julie Petrucci-Treen/ Sarah Roth/ Susan Zuber-Chall/ Warren Sickel</p>	<p>16</p>
<p>17</p> <p>Religious School via Zoom 10:30 am</p>	<p>18</p> <p>MLK Day</p>	<p>19</p>	<p>20</p> <p>Middot Va'ad via Zoom Noon</p>	<p>21</p>	<p>22</p> <p>Shabbat Service via Zoom 7:30 pm</p> <p>Rabbi Rieber</p>	<p>23</p> <p>Kabbalah Study Group 9:00 am via Zoom</p>
<p>24</p> <p>Religious School via Zoom 10:30 am</p>	<p>25</p>	<p>26</p>	<p>27</p>	<p>28</p>	<p>29</p> <p>Shabbat Service via Zoom 7:30 pm</p> <p>Deborah Edelman-Dolan/ Stephanie Schuttera</p>	<p>30</p>
<p>31</p> <p>Temple Beth Sholom Blood Drive 9:30 am</p> <p>NO Religious School</p>						

Temple Beth Sholom

4200 SW Munson Ave, Topeka, KS 66604-1879

The Temple Beth Sholom *Bulletin* is published by Temple Beth Sholom at 4200 SW Munson Ave., Topeka, KS monthly. Material for inclusion should be received at Temple office NO LATER THAN the 8th of the month prior to publication.

Website – templebethsholomtopeka.org

President – Alan Parker

Vice-President – Julie Petruccelli-Treen

Secretary – Deborah Edelman-Dolan

Financial Secretary – Margot Brown

Treasurer – Alan Wisman

Board members:

Ezra Ginzburg, Jane Greene, Danelle Harsin, Melissa

Householder, Allen Kossoy, Hayley Magee, Stephanie Schuttera, Elaine Schwartz, Ron Scrinopskie



UPDATE CONTACT INFORMATION:

We are updating our directory and email list. Please send any updates to your mailing address, phone numbers and email addresses to the Temple office at office@tbstopeka.org.

MONTHLY E-BULLETIN

If you know anyone who is not receiving the monthly email bulletin but would like to receive one, please inform the Temple Office.

**Office Hours – Monday to Friday
9:00 am to 12:00 pm or by appointment**
**Rabbi Rieber Office Hours
by appointment**

COMMUNICATION RESOURCES:

www.templebethsholomtopeka.org

Facebook: Templebethsholom-topeka

Office@tbstopeka.org

Rabbi@tbstopeka.org



UNION FOR
REFORM JUDAISM

האיחוד ליהדות רפורמית

SERVING REFORM CONGREGATIONS IN NORTH AMERICA